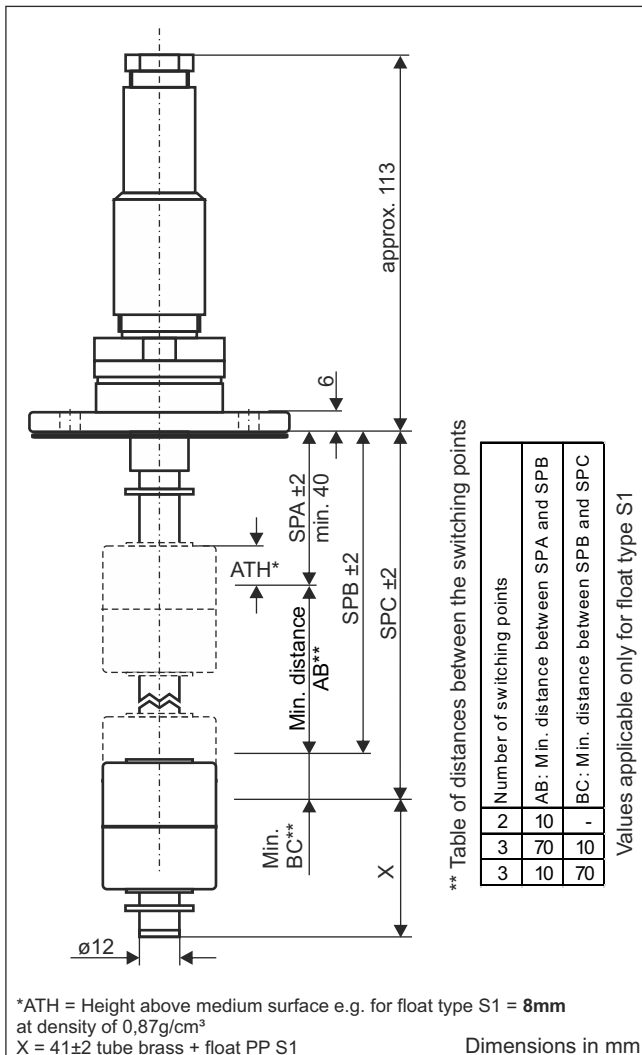


# Data sheet

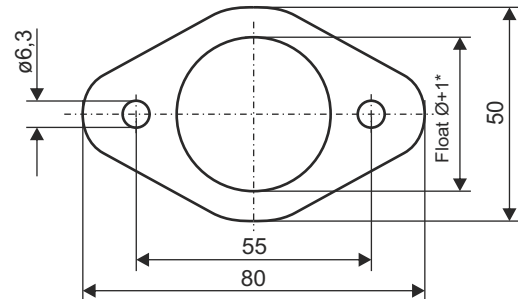
## Float switch brass design 10

### Type: SSM...10...

Device with temperature sensor or temperature switch combinable,  
see also level / temperature measurement technology combined

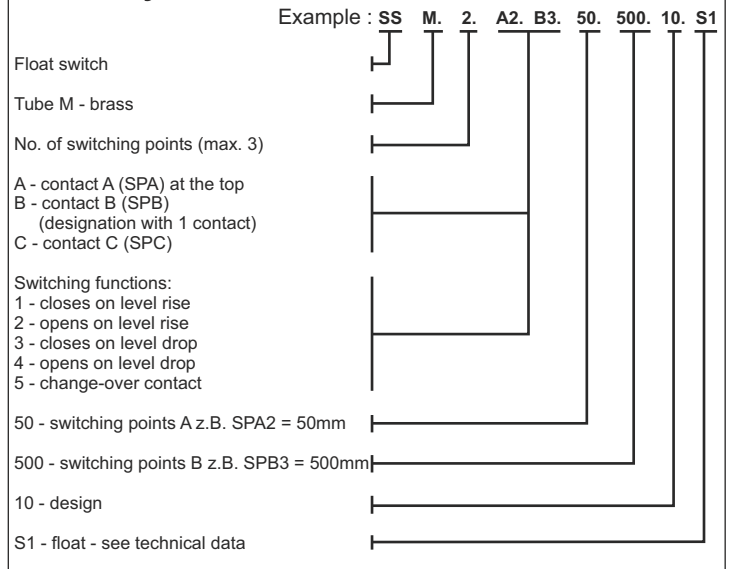


### Drilling pattern

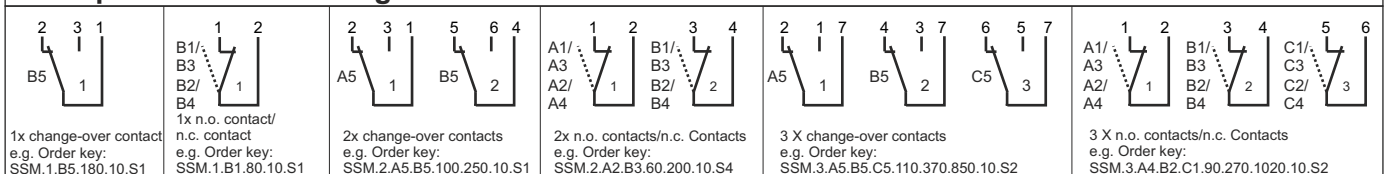


\*float-through hole  
see float-diameter (Ø)

### Order key



### Examples for terminal diagrams



### Technical data

Connection:	plug-type connector 7-pole + PE acc. to DIN EN 175201-804 (DIN 43651), material PA,
Mounting:	oval flange 80x50mm, material PA
Seal:	material NBR
Tube:	ø12mm, material brass
Float:	ø35x40mm, material PP, type S1 ø40x40mm, material PP, type S2 ø40x30mm, material PP, type S3 ø45x52mm, material stainless steel 1.4571, type S4
Switching points:	reed contacts, max. 3x n.o. contacts/ n.c. contacts or change-over contacts further reed contacts on demand
Switching voltage, current, output:	230 VAC, 1A, 60VA
Pressure:	atmospheric
Operating temperature:	-20°C to 80°C in medium; -20°C to 70°C above mounting
Protection rating:	IP 65