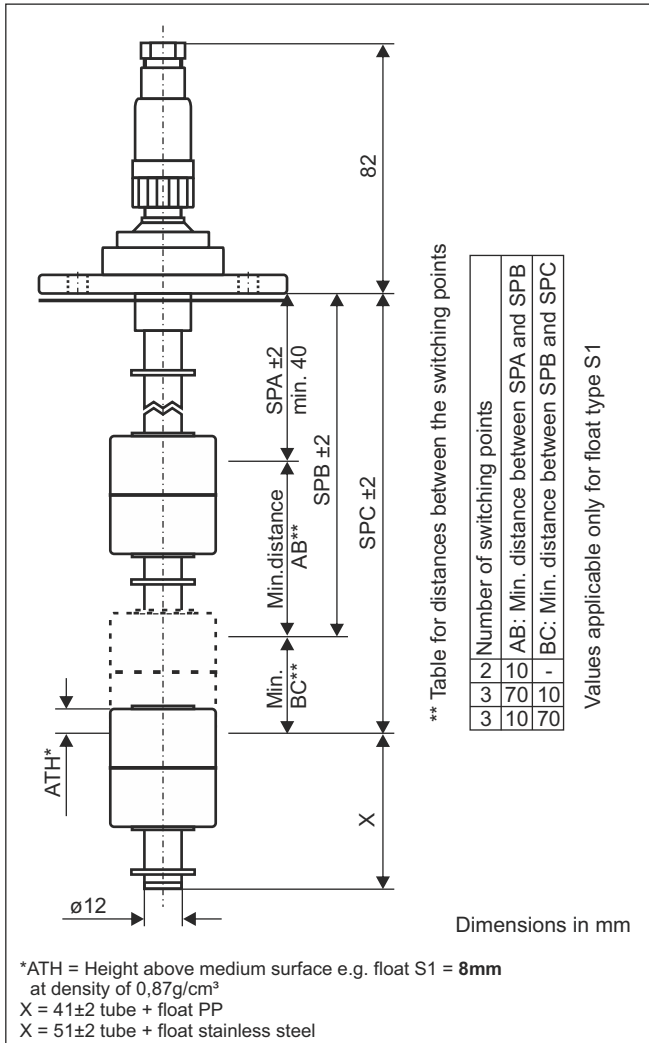


# Data sheet

## Float switch brass design 54 in combination with temperature sensor PT100

### Type: SSM...54...PT100

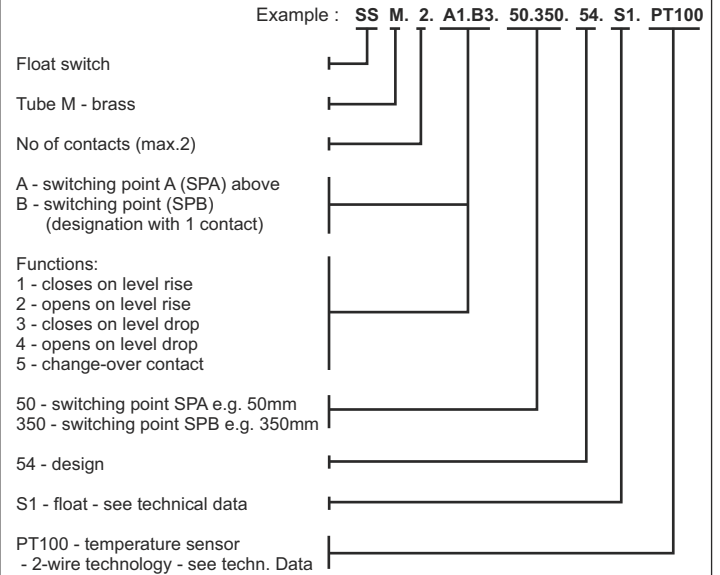


\*\* Table for distances between the switching points

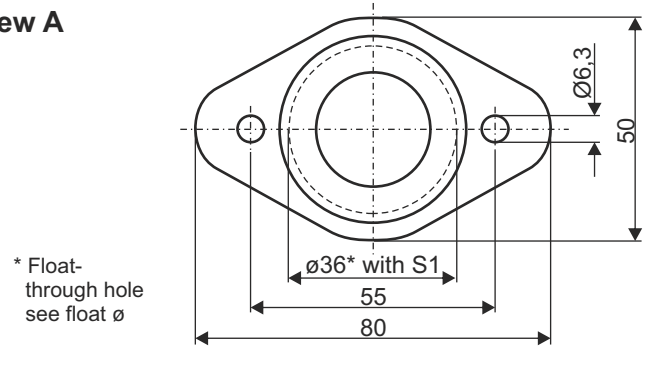
Number of switching points	AB: Min. distance between SPA and SPB	BC: Min. distance between SPB and SPC
2	10	10
3	70	70
3	10	70

Values applicable only for float type S1

### Order key



### View A



### Technical data

Connection:	plug-type connector M12x1 4- or 5-pole see terminal diagrams, material PA
Mounting:	oval flange 80x50mm, material PA
Seal:	material NBR
Tube:	ø12mm, material brass
Float:	ø35x40mm, material PP, type S1 ø40x40mm, material PP, type S2 ø40x27mm, material PP, type S3 ø44x53mm, material stainless steel 1.4571, type S4
Level switching points:	reed contacts, max.2 x n.o. contact/n.c. contact; max. 1 x change over contact
Switching voltage, current, capacity:	24VDC, 150mA
Temperature sensor:	platinum resistor PT100 acc. DIN 60751 in 2- and 3-wire technology
Tolerance class:	DIN EN 60751, class B
Nominal resistance:	100 Ohm bei 0°C
Temperature coefficient:	3850ppm/K
Pressure:	atmospheric
Operating temperature:	-20°C to 80°C in medium, -20°C to 70°C above mounting
Protection rating:	IP 65

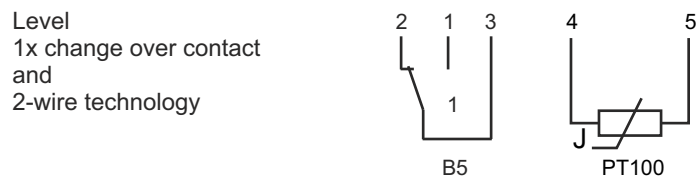
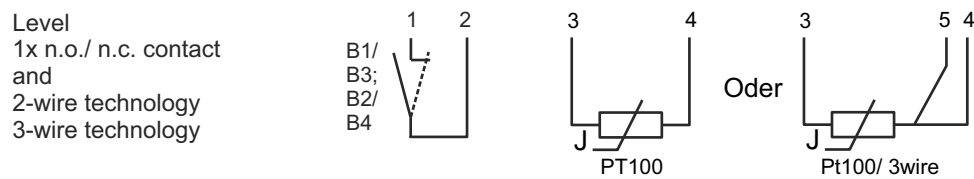
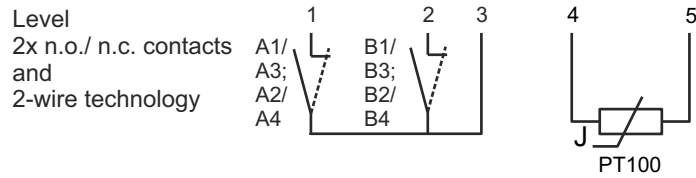
# Data sheet

## Float switch brass design 54

### in combination with temperature sensor PT100

#### Type: SSM...54...PT100

### Terminal diagram



Subject to change