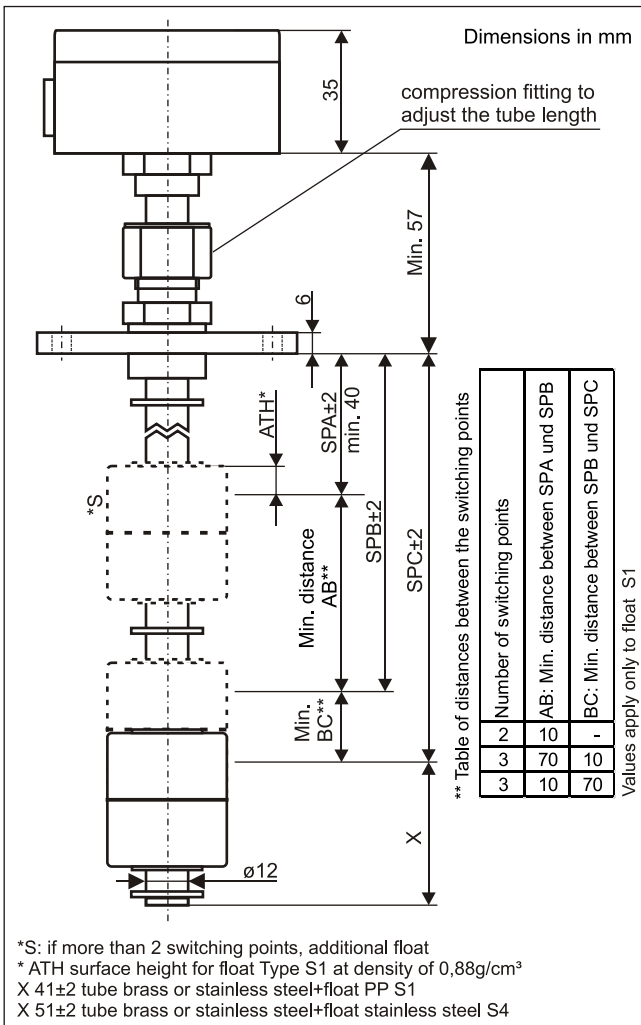


Data sheet

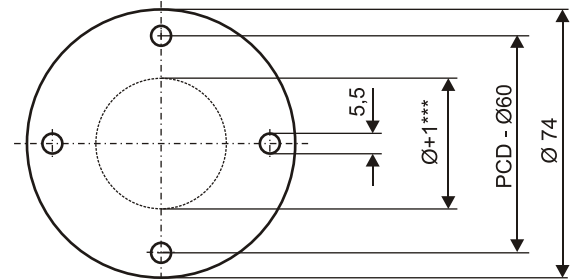
Float switch with tube length adjustable design 40

Type: SS...40...

Device with temperature sensor or temperature switch combinable,
see also level / temperature measurement technology combined

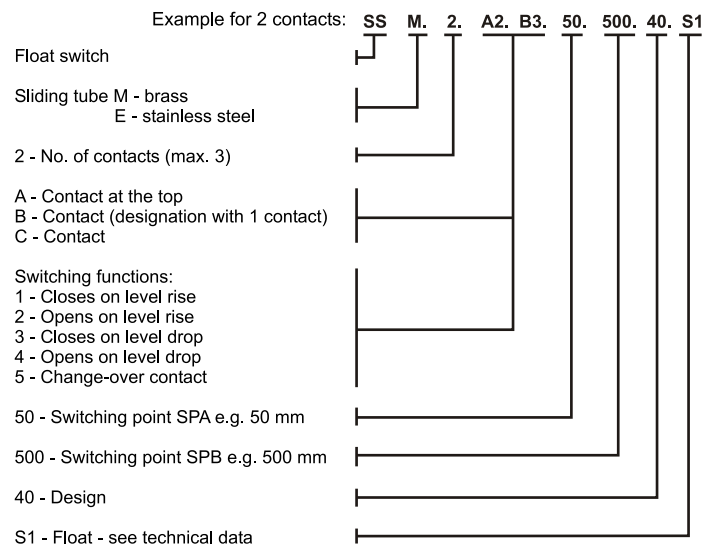


Drilling pattern

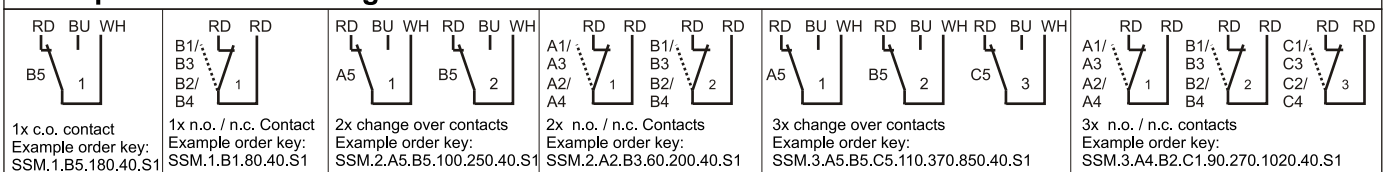


***float through hole
- see technical data

Order key



Examples of terminal diagrams



Technical Data

Connection:	terminal connection 1.5 mm ² in the housing 64x58x35mm (wxdxh) cable entry at the housing M16x1.5
Mounting:	aluminium die-cast housing, colour grey round-flange OD74 PCD60, material aluminium
Sliding tube:	tube length adjustable via the compression fitting Ø12mm, material brass, stainless steel
Float:	Ø35x40mm, material PP, type S1 Ø52mm, material stainless steel, type S7 Ø45x52mm, material stainless steel, type S4
Switching points:	reed contacts max. 3x n.o. / n.c. contacts or change-over contacts
Switching voltage, current, output:	230 VAC, 1A, 60VA
Pressure:	max. 1 bar
Operating temperature:	-20°C to 80°C in medium, -20°C to 70°C above mounting
Protection rating:	IP 65