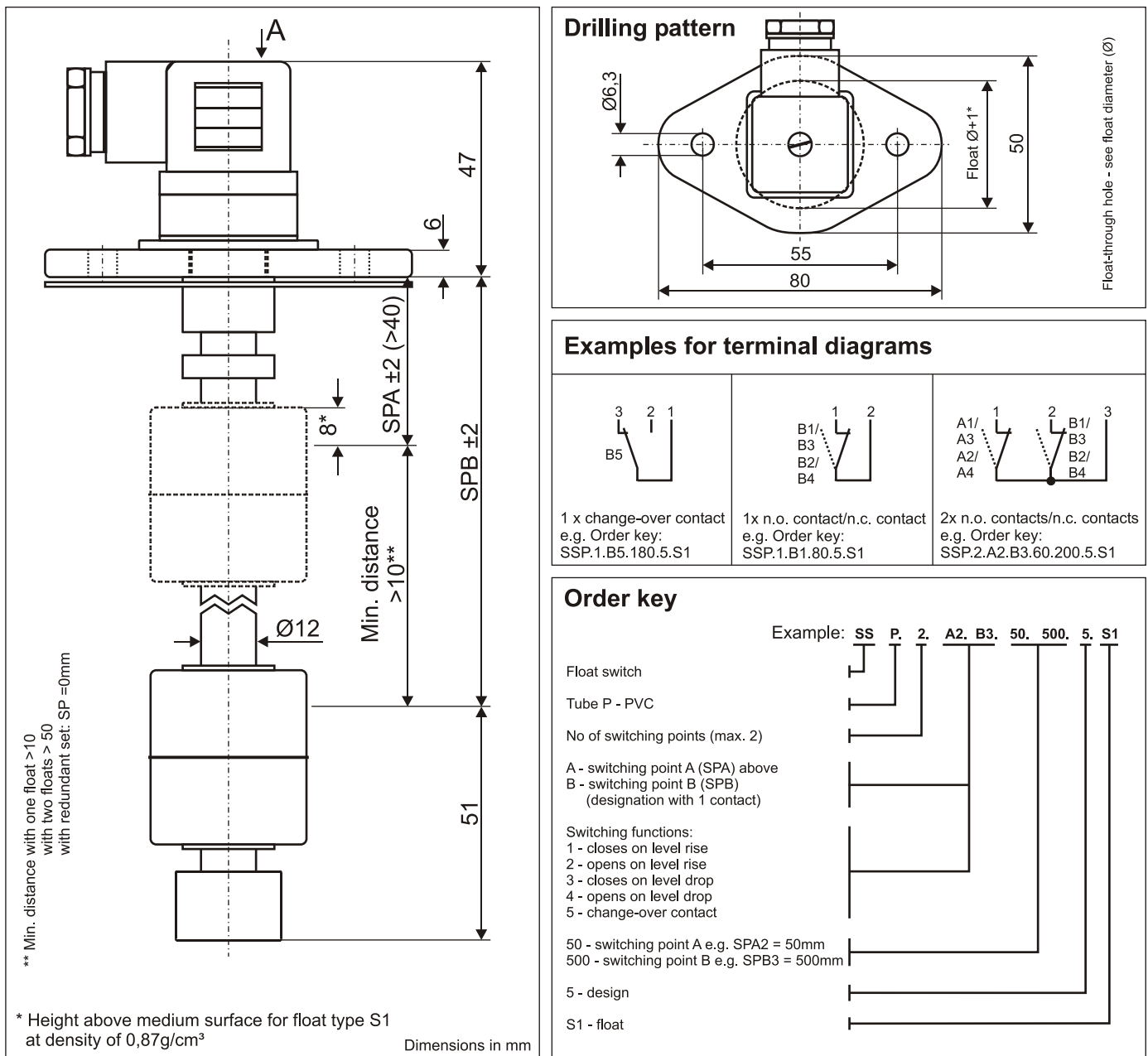


Data sheet

Float switch plastic design 5

Type: SSP...5...

Device with temperature sensor or temperature switch combinable,
see also level / temperature measurement technology combined



Technical data

Connection:	plug-type connector 3-pole + PE, DIN EN 175301-803 (DIN 43650), material PA
Mounting:	oval-flange 80x50mm, material PA
Seal:	material NBR
Tube:	$\varnothing 12$ mm, material PVC
Float:	$\varnothing 35 \times 40$ mm, material PP, type S1
Switching points:	reed contacts: max. 2x n.o. contacts/n.c. contacts or 1x change-over contact
Switching voltage, current, capacity:	230 VAC, 1A, 60VA
Pressure:	atmospheric
Operating temperature:	-10°C to 60°C in medium; -20°C to 70°C above mounting
Protection rating:	IP 65