

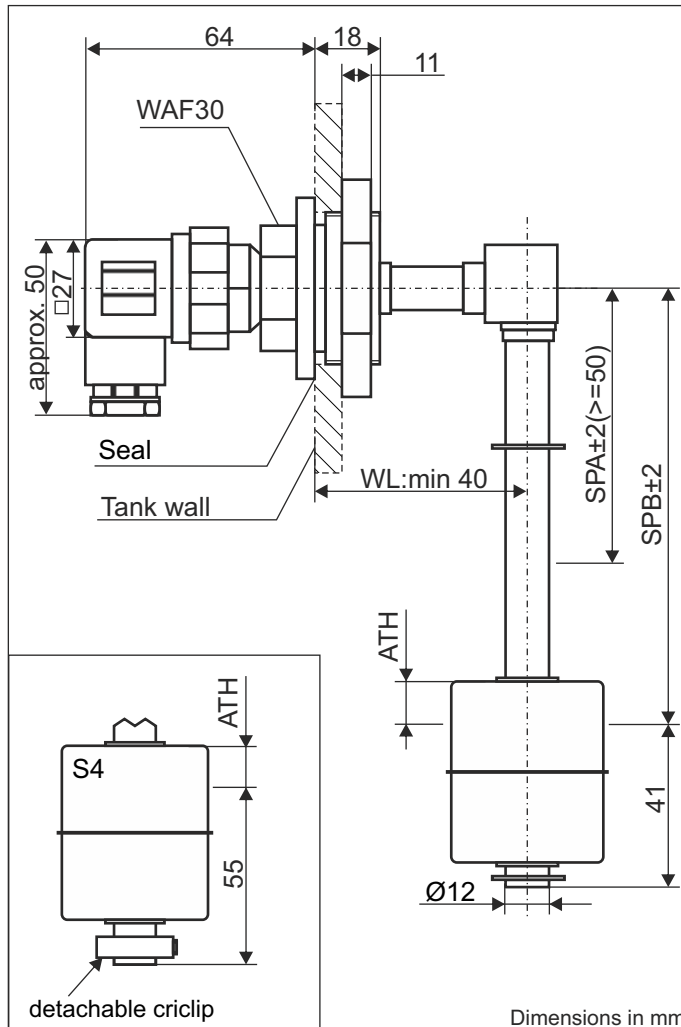
Data sheet

Float switch design 4

for installation in the wall of a tank

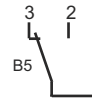
Type: SSE...4...

Device with temperature sensor or temperature switch combinable,
see also level / temperature measurement technology combined

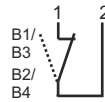


ATH	Height above medium surface e.g. float S4 = 12mm at density of 0,997g/cm ³
X	41±2 tube stainless steel + float PP
X	55±2 tube stainless steel + float stainless steel

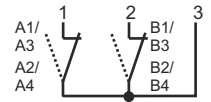
Examples for terminal diagrams



1 x change-over contact
e.g. Order key:
SSE.1.B5.180.4.S1



1 x n.o. contact/n.c. contact
e.g. Order key:
SSE.1.B1.80.4.S1

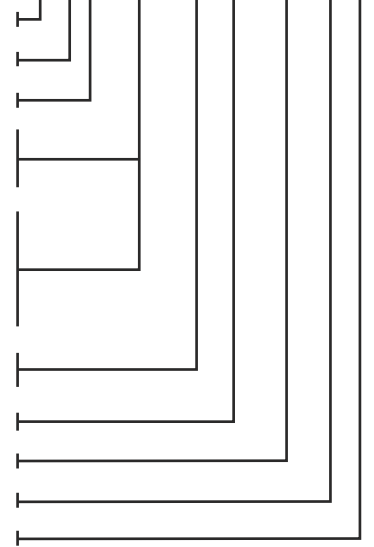


2 x n.o. contacts/n.c. contacts
e.g. Order key:
SSE.2.A2.B3.60.200.4.S4

Order key

Example : SS E 2. A2. B3. 50. 500. WL50. 4. S1

Float switch
Tube E - stainless steel
No. of switching points (max. 2)
A - switching point A above
B - switching point B
(designation with 1 contact)
Switching functions:
1 - closes on level rise
2 - opens on level rise
3 - closes on level drop
4 - opens on level drop
5 - change-over contact
50 - switching point A
e.g. SPA2 = 50mm
500 - switching point B
e.g. SPB3 = 500mm
WL50 - angle length
4 - design
S1 - float - see technical data



Subject to change

Technical data

Connection:	plug-type connector 3-pole + PE, DIN EN 175301-803 (DIN 43650), material PA
Mounting:	screwed connection 1 1/4", material stainless steel further mountings on request
Seal:	material EPDM
Tube:	Ø12mm, material stainless steel 1.4571
Float:	Ø35x40mm, material PP, type S1 Ø45x52mm, material stainless steel, type S4 (with removable collar)
Switching points:	reed contacts, max. 2x n.o. contacts/n.c. contacts or 1x change-over contact
Switching voltage, current, capacity:	230 VAC, 1A, 60VA
Pressure:	max.1bar, with stainless steel float max.25bar
Operating temperature:	-20°C to 80°C in medium; -20°C to 70°C above mounting (with PP) -20°C to 100°C in medium; -20°C to 70°C above mounting (with stainless steel)
Protection rating:	IP 65