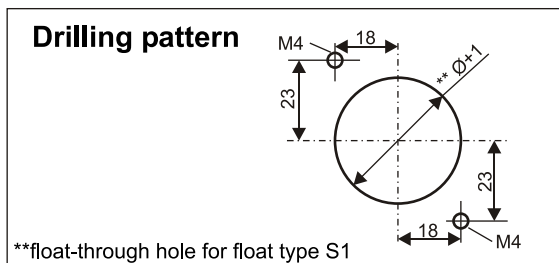
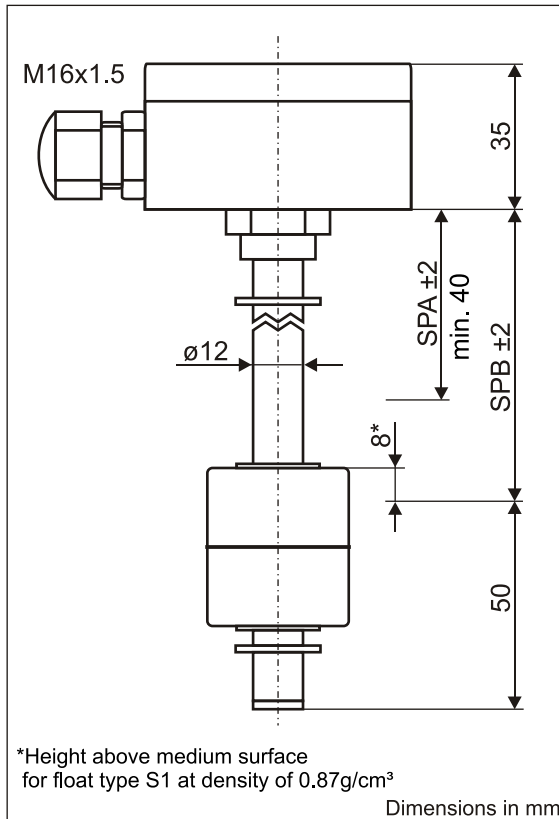


Data sheet

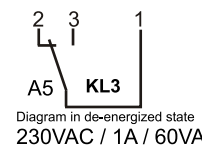
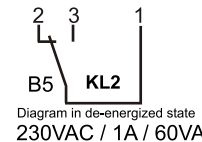
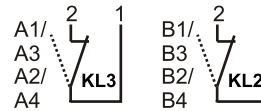
Electronic-temperature switch in combination with float switch

Type: STB-1...02...

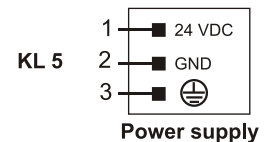
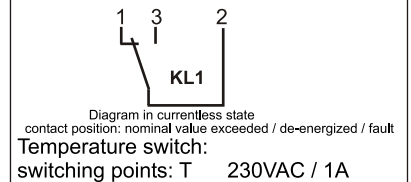
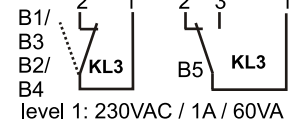


Terminal diagram

Level: 2x c.o./n.c./n.o. contact



Level: 1x c.o./n.c./n.o. contact



Order key

example for 2 switching points: **STB-1. A2. B3. 150. 500. 02. 60**

Type

A - Switching contact A above
B - Switching contact B
(designation in case of only 1 switching contact)

Switching functions:

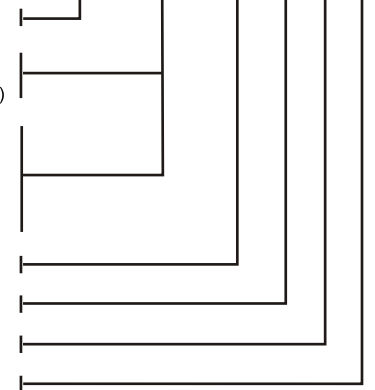
- 1 - Closes on level rise
- 2 - Opens on level rise
- 3 - Closes on level drop
- 4 - Opens on level drop
- 5 - Change-over contact

50 - Switching point A e.g. SPA2 = 150mm

500 - Switching point B e.g. SPB3 = 500mm

02 - Design

Temperature switch e. g. 60°C



Technical data

Connection:	terminal connection, cable gland M16x1.5
Mounting:	in aluminium die-cast housing 64x58x35mm (hwxwd)
Seal:	2x M4 see drilling pattern, other mountings on demand
Tube:	profile seal, material NBR
Float:	Ø12mm, length L ±1mm, material brass
Level Switching points:	Ø35x40mm, material PP, type S1
Temp.switching points:	reed contacts: 2 n.o. contacts/n.c. contacts / change-over contact
Switching capacity level:	switching points: SPA, SPB ±2mm
Switching capacity temperature:	1 relay contact, upper temperature switching point T °C
Temperature measurement:	230VAC / 1A / 60VA
Relay switching function:	230VAC / 1A
Temperature measuring range:	at the bottom of the tube
Temperature measuring accuracy:	relay is actuated when T < limiting value and yellow LED is on
Temperature hysteresis:	relay is released when T > limiting value or device fault
Supply voltage:	-20°C to 100°C
Pressure:	±5% at -20°C to 100°C
Operating temperature:	3°C fixed setting
Protection rating:	24VDC ±15%, reverse polarity protected
	max. 1 bar
	-20°C to 80°C in medium; -20°C to 70°C above mounting
	IP 65